

Tyrosine, Tryptophan and Tramadol by HPLC with Fluorescence Detection

ACE[®]
Ultra-inert
UHPLC & HPLC Columns

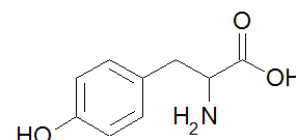
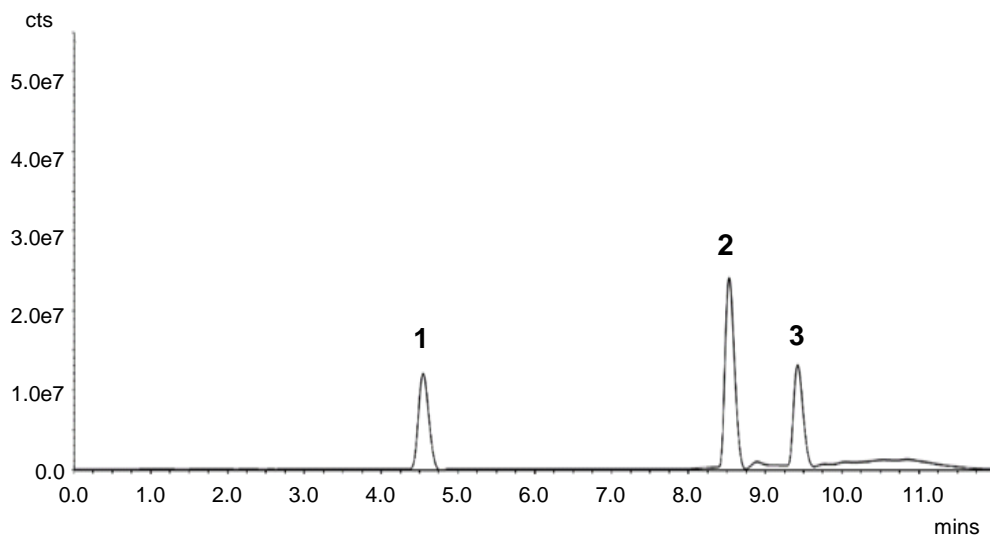
Application #AN4180

Conditions

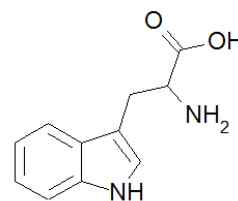
Column: ACE 5 C18
Dimensions: 150 x 4.6 mm
Part Number: ACE-121-1546
Mobile Phase: A: 50 mM NaH₂PO₄ in H₂O
B: MeCN/H₂O (60:40 v/v)

Time (mins)	%B
0.0	0
5.0	10
8.0	100
9.0	100
9.5	0
14.0	0

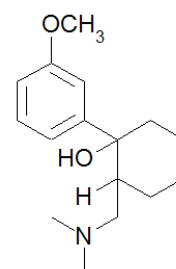
Flow Rate: 1 mL/min
Injection: 5 µL
Temperature: 25 °C
Detection: Fluorescence, λ_{Ex} 280 nm, λ_{Em} 340 nm



1. L-Tyrosine



2. L-Tryptophan



3. Tramadol

Reproduced with permission of Centre for the Research and Technology in Agro-Environmental and Biological Sciences, University of Trás-os-Montes and Alto Douro (UTAD-CITAB), Portugal

© 2015 ACT Ltd. All rights reserved. All products are available worldwide.

For more information contact your local ACE distributor or visit
www.ace-hplc.com or email: info@ace-hplc.com


ACE[®]
UHPLC & HPLC
Columns