

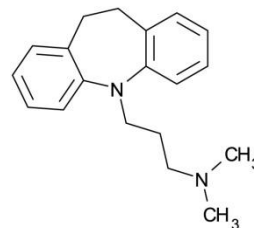
# UHPLC Analysis of Tricyclic Antidepressants

**ACE**<sup>®</sup>  
Ultra-inert  
UHPLC & HPLC Columns

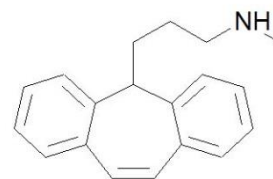
Application #AN4680

## Conditions

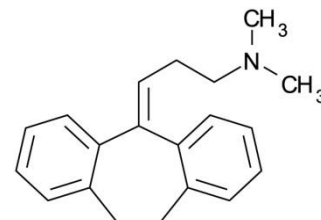
Column: ACE Excel 1.7 SuperC18  
Dimensions: 50 x 3.0 mm  
Part Number: EXL-1711-0503U  
Mobile Phase: 20 mM ammonium formate pH 3.0 in MeOH:H<sub>2</sub>O 45:55 v/v  
Flow Rate: 1.25 mL/min  
Injection: 0.7 µL  
Temperature: 60 °C  
Detection: UV, 260 nm  
Instrument: Chromaster UltraRs



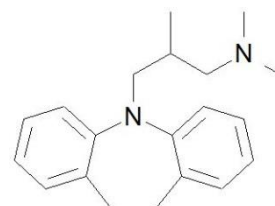
1. Imipramine



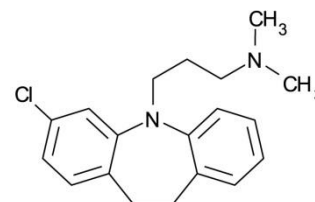
2. Protriptyline



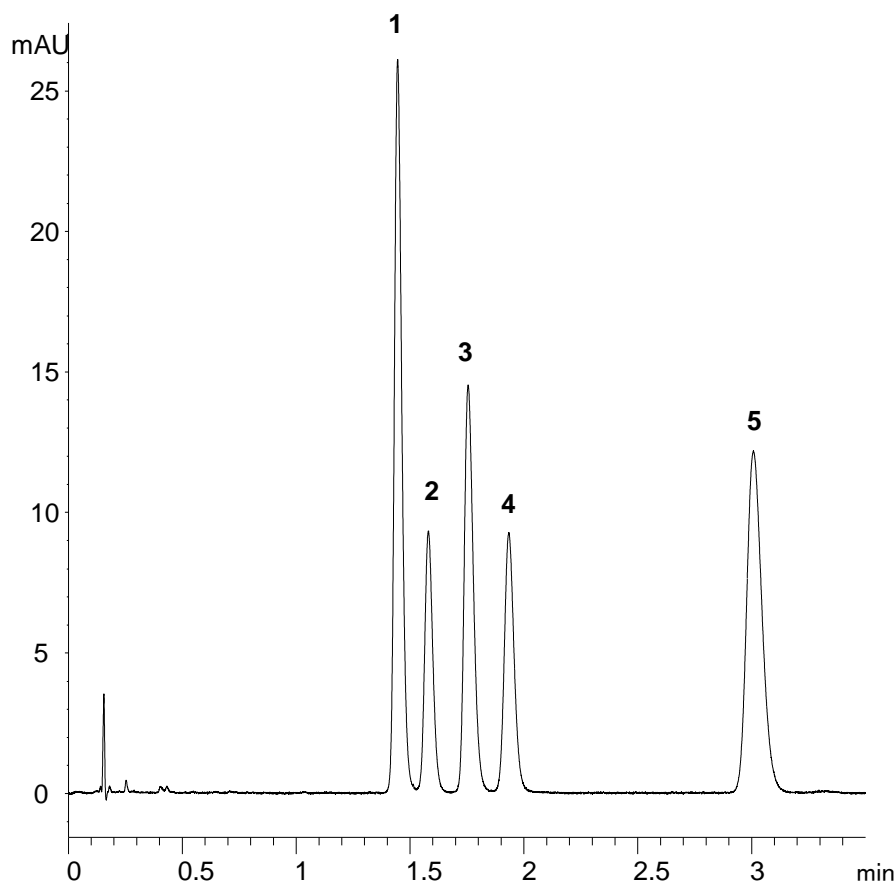
3. Amitriptyline



4. Trimipramine



5. Clomipramine



© 2016 ACT Ltd. All rights reserved. All products are available worldwide.

For more information contact your local ACE distributor or visit  
[www.ace-hplc.com](http://www.ace-hplc.com) or email: [info@ace-hplc.com](mailto:info@ace-hplc.com)

  
**ACE**<sup>®</sup>  
UHPLC & HPLC  
Columns