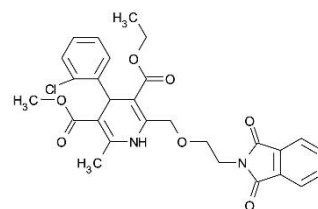
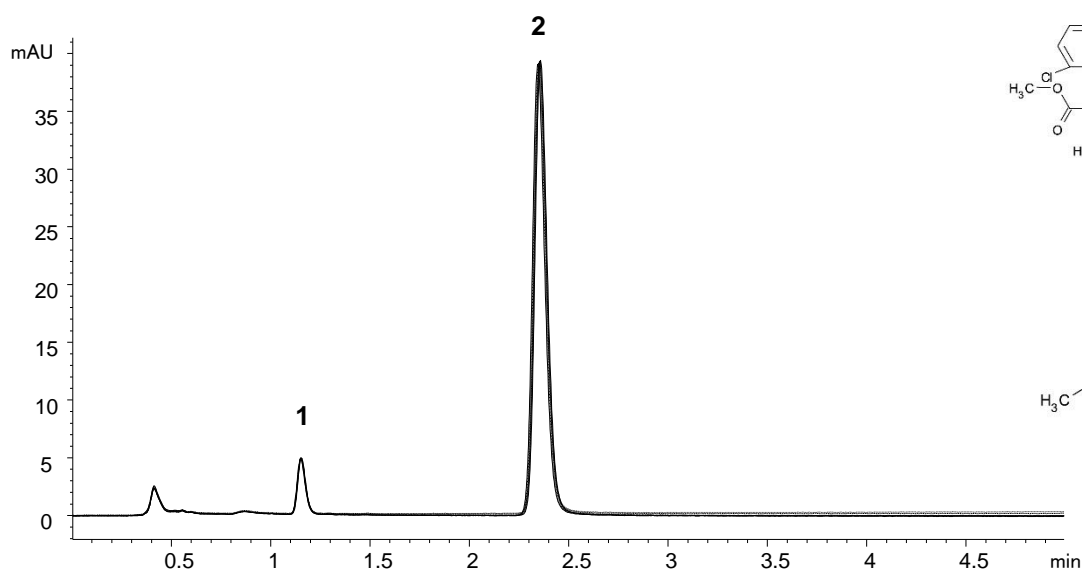


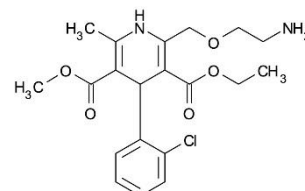
Conditions

Column:	ACE UltraCore 2.5 SuperC18
Dimensions:	75 x 3.0 mm
Part Number:	CORE-25A-7503U
Mobile Phase:	MeOH/MeCN/buffer pH 3.0 (35:15:50 v/v/v)
Buffer:	7.0 mL triethylamine in 900 mL H ₂ O to 1000 mL volumetric flask. Adjust to pH 3.0 with phosphoric acid. Dilute to volume with H ₂ O
Flow Rate:	0.8 mL/min
Injection:	5 µL
Temperature:	25 °C
Detection:	UV, 237 nm

Chromatogram shows 6 injections overlaid



1. Impurity A



2. Amlodipine

Translated method according to USP <621> guidance. Always check the latest and official method information from the relevant pharmacopoeia prior to analysis.

© 2015 ACT Ltd. All rights reserved. All products are available worldwide.