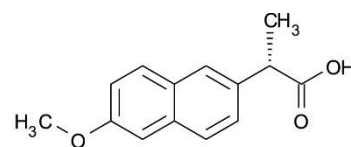
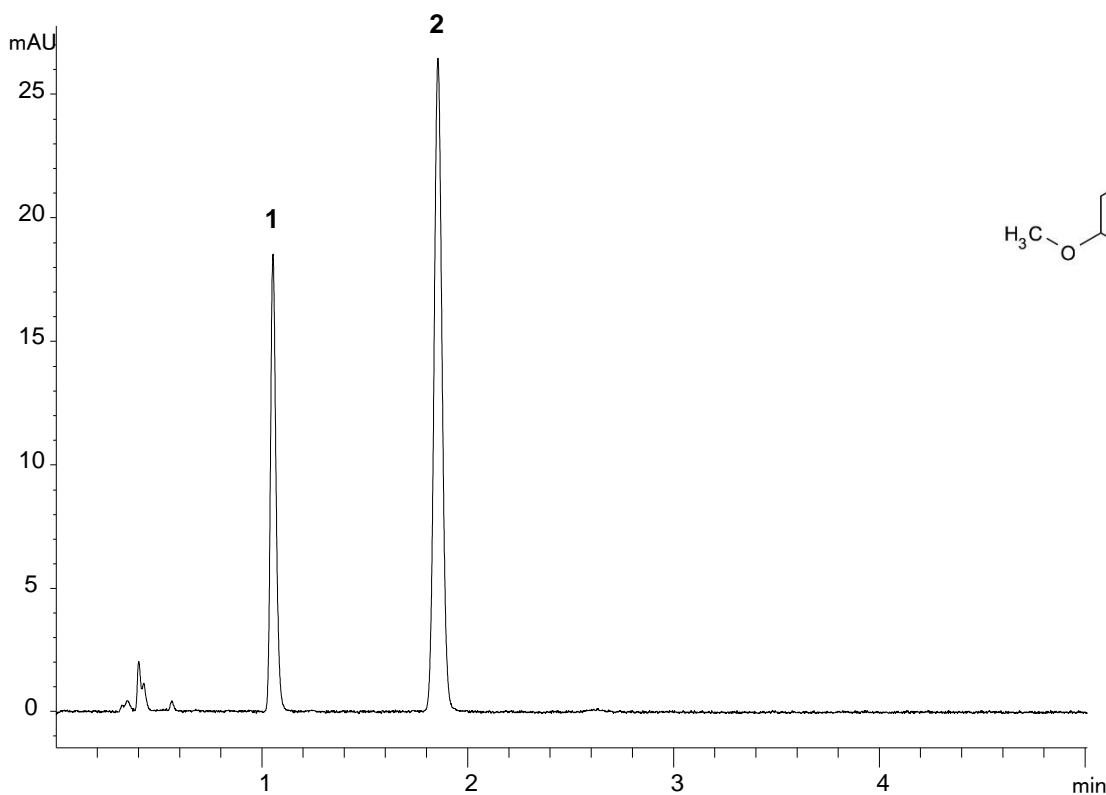
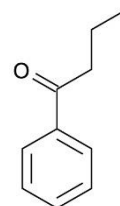


## Conditions

Column:	ACE UltraCore 2.5 SuperC18
Dimensions:	50 x 3.0 mm
Part Number:	CORE-25A-0503U
Mobile Phase:	H <sub>2</sub> O with glacial acetic acid (49:1)/MeCN (50:50 v/v)
Flow Rate:	0.51 mL/min
Injection:	2.8 µL
Temperature:	Ambient (22 °C)
Detection:	UV, 254 nm



1. Naproxen



2. Butyrophenone

Translated method according to USP <621> guidance. Always check the latest and official method information from the relevant pharmacopoeia prior to analysis.

© 2015 ACT Ltd. All rights reserved. All products are available worldwide.