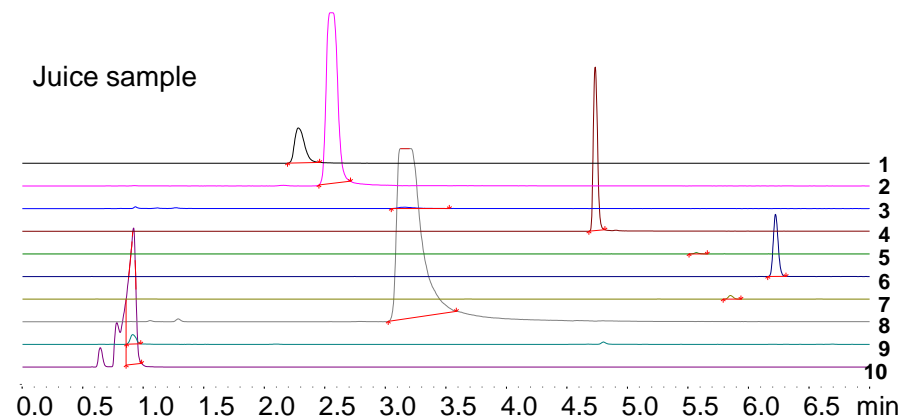
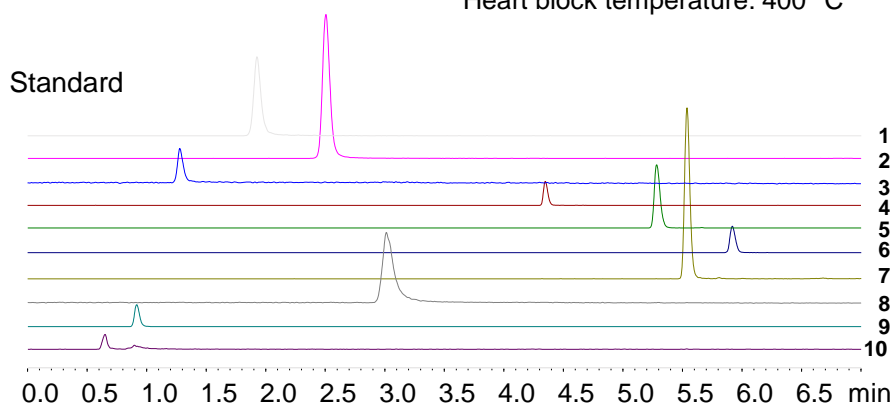


Conditions

Column: ACE Excel 3 C18-PFP
Dimensions: 100 x 2.1 mm
Part Number: EXL-1110-1002U
Mobile Phase: A: 15 mM formic acid, adjusted to pH 3.8 with ammonia solution
B: MeOH

Time (mins)	%B
0.00	1
1.00	1
3.00	8
3.10	25
6.00	50
6.50	50
6.51	1
9.00	1

Flow Rate: 0.4 mL/min
Temperature: 30 °C
Detection: LCMS-8040 triple quad MS
ESI positive mode (ESI negative for ascorbic and citric acid)
DL temperature: 250 °C
Heart block temperature: 400 °C



1. Thiamine (Vitamin B1)
(*m/z* 266.10 → 122.15)
2. Pyridoxine (Vitamin B6)
(*m/z* 170.20 → 152.15)
3. Nicotinic acid (Vitamin B3)
(*m/z* 124.00 → 78.00)
4. Pantothenic acid (Vitamin B5)
(*m/z* 220.30 → 90.05)
5. Cyanocobalamin (Vitamin B12)
(*m/z* 678.50 → 147.05)
6. Riboflavin (Vitamin B2)
(*m/z* 377.20 → 243.10)
7. Biotin (Vitamin B7)
(*m/z* 245.10 → 227.05)
8. Nicotinamide (Vitamin B3)
(*m/z* 123.20 → 80.05)
9. Ascorbic acid (Vitamin C)
(*m/z* 175.10 → 114.80)
10. Citric acid
(*m/z* 191.10 → 87.15)